

CWEP NewsLine

Volume 9 Issue 4
January 2008

CWEP Website

<http://www.sw.uh.edu/communityoutreach/cwep.php>

We wish you all



A HAPPY
NEW YEAR



feliz año nuevo



Director's Comments

Joe Papick

Happy New Year!



"As this **New Year** starts, I want to take this opportunity to **wish all of you a very happy, peaceful, and successful New Year** both in your academic world and your personal world. I would also like to take this opportunity to remind us all of the overall goals of the CWEP program. The **CWEP** program is a **collaborative process between CPS and the University of Houston** to prepare professionally educated social workers for careers in Child Protective Services. **The goals of CWEP are to create opportunities for existing staff to complete their MSW, to develop a pool of educated MSW students who will work in CPS, and to enhance the capacity of GCSW in aspects of child welfare practice.** Keeping children safe and secure ought to be easy. Sadly, in a world where families are dissolving, where children are taught that many adults cannot be trusted and where the systems designed to protect children in need are in crisis, it is not. **We must try to improve the outcomes for all children in the child welfare system so that those who enter child welfare programs leave safe and in permanent homes. CPS needs people on the front line with social work skills** and that is what CWEP is for and it is my hope and belief that you all will be able to make significant improvements in these programs that will truly impact the families and children we serve. Please remember if there are any questions you have regarding CWEP, please let me know. You can contact me by E-mail at jpapick@uh.edu."



What's Inside

Director's Comments	1
Alumni Spotlight	2
Baby Grace Abuse	2
Announcements	3
Topic Sharing:	4
Social Relationships of Physically Abused Schoolchildren (1993-1997)	

CWEP Staff

Dr. Monit Cheung
Principal Investigator
mcheung@uh.edu

Joe Papick
Director
jpapick@uh.edu

Kathy Clark
Field Coordinator
klclark@uh.edu

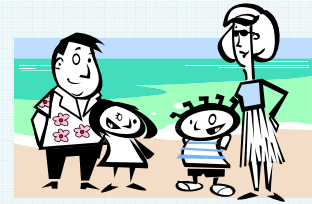
Brunessia Wilson
Student Affairs Coordinator
bwilso2@central.uh.edu

Ann McFarland
Stipend Coordinator
amcfarland@uh.edu

Dr. Patricia Taylor
Curriculum Coordinator
ptaylor2@uh.edu

Venus Tsui
CWEP Newsline Editor
Graduate Associate
sftsui@uh.edu

Alumni Spotlight



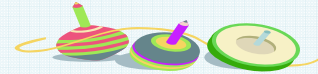
This month we are highlighting **Shekerah Jacobs**.

1. What is your current position?

Family Based Safety Services Specialist IV. I work with families whose children have been voluntarily placed with relatives, friends, and/or the children are still in the home with their parents. The determining factor for leaving a child in the home without taking **conservatorship (custody)** depends on **the risk, type of abuse/neglect, age and history of maltreatment with the family.**

2. What did you like most about the CWEP program?

The program paid all of my school expenses, and gave me an opportunity to advance my education, with a **Master Level Degree** that will impact my future with helping individuals.



3. How did CWEP prepare you for your job?



I was already in a position in CPS prior to becoming a CWEP student. However, I enjoyed the “self examination” course. **This course has impacted my communication style** and has taught me how to be more versatile in different positions within the agency.



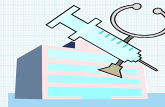
4. Do you have any advice for current CWEP students?

Take advantage of everything that CWEP has to offer. **Hold on to your dreams** and keep pressing forward.



5. What are your plans for the future?

To work as a social worker in a **hospital setting.**



Many Thanks To Shekerah!

BABY GRACE ABUSE FAMILIAR, ex-wife says

(News from Houston Chronicle, December 12, 2007)

A woman who was once married to the father of a man now charged in the **brutal beating death of “Baby Grace”** said her life mirrored that of the child’s mother.



- ✧ Trenor and her new husband Zeigler, 24, beat Baby Grace because Zeigler was not pleased with the child’s discipline.
- ✧ Grofer, 54, said that when she was married to Zeigler’s father in the early 1970s, a similar scenario played out in their household.
- ✧ Both Trenor and Grofer were **young mothers, away from family and friends, and lived with a controlling spouse.**
- ✧ Trenor and Zeigler are **charged with injury to a child resulting in death**, which carries a maximum sentence of life in prison.
- ✧ **Texas law allows a capital murder charge in the slaying of a child younger than 6.**



Dr. Monit Cheung, a professor of social work at the University of Houston, said **it is very common to find that a person accused of child abuse also was a victim of child abuse.**

For details of this news, please click the website at http://www.chron.com/CDA/archives/archive.mpl?id=2007_4476851.

Announcements

Twenty-Second Annual Conference on Prevention of Child Abuse

February 4-5, 2008 Omni San Antonio Hotel, San Antonio, Texas

A statewide Conference designed to offer quality training and information on topics and model programs of interest to leaders in **child abuse prevention**: social workers, counselors, educators, foster parents, other interested child advocates, etc.

For details, please visit the website at <http://www.preventchildabusetexas.org/nextconference.html>.

Presented by Prevent Child Abuse Texas



Children at Risk



Children's Summit

February 5, 2008 Tuesday 8:00am -- 11:30am
United Way Building, 50 Waugh Drive, Houston, TX 77007



The status of children will be discussed, new data will be released, and Houston leaders will present how they are creating change.

For registration, please click <http://www.childrenatrisk.org/childrenatrisk.cfm?a=cms,c,435> or go to <http://www.childrenatrisk.org/>.



CWEP Symposium

March 7, 2008 Friday 1:00 pm -- 4:00pm
Room D36, side B at Murworth

Important!

ALL CURRENT CWEP STUDENTS ARE REQUIRED to attend the CWEP Symposium!

All CPS staff are invited! Welcome to join us!

First part is a town hall meeting;

Second part: Tentative topic: Legal knowledge for CPS work;

Panel of attorneys will present their experience and answer questions.



E-Magazine: Texas Diversity

- This **new** magazine covers **inclusion and diversity-related issues** that impact our state.
- The **first issue**, to be launched during the first quarter of 2008 and **distributed freely**, will feature women in leadership and a cover story on **the Most Powerful and Influential Women in Texas**.

For more information, please visit the website at <http://www.texasdiversitymagazine.org/>.

NewsLine is accepting submissions from CWEP students

Would you like to contribute a **short article**, **poem** or **editorial** relating to **child welfare**?

Please send submissions for consideration to sftsui@uh.edu.

Deadline: March 14, 2008, Friday

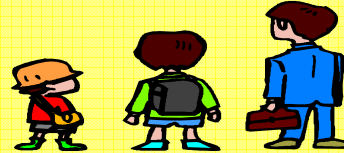
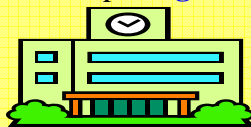




Topic Sharing: Social Relationships of Physically Abused Schoolchildren (1993-1997)

Investigator: Salzinger, S.

This study examined the **social relationships and behavior of physically abused schoolchildren**. Its emphasis on **peer relationships** was based on the fact that **abused children's basic socializing and support system -- their relationship with family --** was expected to be damaged and give rise to **internalizing and externalizing problems**. Their **peer networks** therefore were expected to play a **disproportionate role in their adaptive functioning** in many domains of development. **Family relationships**, operating through social learning and social cognitive processes, were expected to **influence children's social behavior**, giving rise to aggressive and antisocial behavior. Such behavior was hypothesized to raise the risk for lowered social status with peers, which in turn was expected to lead to internalizing and externalizing problem behaviors. For abused children who managed to establish **good relationships with peers**, such relationships **might mitigate the effects of abuse on later functioning**.



➤ **Sample:**

The sample consisted of **100 physically abused urban schoolchildren** (65 boys, 35 girls) ages 9-12 years and in grades 4-6, and 100 non-abused classmates case-matched for gender, age, and, as closely as possible, for race, ethnicity, and socioeconomic status.

➤ **Recruitment:**

Abused children were recruited from **confirmed cases of physical abuse** in consecutive entries onto the Abuse Register from **1992 to 1996**.



➤ **Conclusion:**

Family contextual factors are important influences on child outcome including parent-, teacher- and peer-rated child behavior. The author proposed an **ecological model** that indicated **family stress** as the principal external factor, with effects on outcome also associated with **caretaker distress, partner violence, and physical child abuse**. **Results were consistent with the hypothesis that partner violence and caretaker distress, both associated with family stress, increase the risk for child abuse and thereby raise the child's risk for problem behaviors.**



This text is summarized from the original source:

http://www.ndacan.cornell.edu/NDACAN/Datasets/Abstracts/DatasetAbstract_112.html

HAPPY NEW YEAR



2008!

