



**NASW Social Work Pioneers®**  
**18th Annual Program & Luncheon**  
**Omni Shoreham Hotel | Washington, D.C.**

# **The Future Is Now:**

Charting a Course for Social Justice for All

---

## Current & Founding Pioneer Committee Chairs



**BETSY VOURLEKIS**  
Chair,  
NASW Social Work Pioneer®



**JESSE J. HARRIS**  
Co-Chair, Emeritus,  
NASW Social Work Pioneer®



**MARK G. BATTLE**  
Co-Founder and  
Past Co-Chair,  
NASW Social Work Pioneer®  
7/28/1924 – 10/26/2011



**RUTH IRELAN KNEE**  
Co-Founder and  
Past Co-Chair,  
NASW Social Work Pioneer®  
3/21/1920 – 10/8/2008

---

## Newly Elected Pioneers

### *Congratulations to the 2024 Pioneers*

Franklin Brooks  
William Neal Brown\*  
(1919-2009)  
Karen Bullock  
William H. Butterfield  
Norman H. Cobb  
Rachel Crandall-Crocker  
King Davis  
Enrico De Gironimo

Diana DiNitto  
E. Daniel Edwards  
Dorothy Faller  
Santos Hernandez  
Charles E. Lewis Jr.  
Samuel Bernard Little  
Louise Thomson Locker  
Louis Lowy\* (1920-1991)  
Goutham M. Menon

M. Patricia O'Brien  
Kathleen Pottick  
Susan P. Robbins  
Michael Sherraden  
Julie E. Shroyer  
Kimberly J. Strom  
Dexter R. Voisin  
James Wayne

**NASW Social Work Pioneers®**  
**18th Annual Program & Luncheon**

**Saturday, October 19, 2024**  
**Washington, D.C.**

## ABOUT THE PIONEERS

The NASW Social Work Pioneer® Program was created to honor members of the social work profession who have contributed to the evolution and enrichment of the profession. The Pioneer Program identifies and recognizes individuals whose unique dedication, commitment and determination have improved social and human conditions.

Pioneers are role models for future generations of social workers. Their contributions are reflected in every aspect of the profession, as well as in the establishment of social policies and human services programs. They have accomplished this through practice, teaching, writing, research, program development, administration, advocacy, legislation and election to public office.

Being elected by one's peers as an NASW Social Work Pioneer® is one of the profession's highest honors.

*Nominations are accepted year-round, with a deadline of March 31 each year for consideration in that year's awards.*

## PLANNING COMMITTEE

Kathy Wehrmann, PhD, MSW, Chair  
Dorothy V. Harris, ACSW, Co-Chair  
Elaine Congress, DSW, ACSW  
Isadora Hare, DCSW, ACSW  
Steve Hornberger, MSW  
Charles Howard, PhD, MSW  
Hal Lipton, LICSW, LCSW-C  
Patricia Martin-O'Meally, ACSW

## NASW FOUNDATION

Anthony Estreet, PhD, MBA, LCSW-C  
CEO, NASW  
President, NASW Foundation  
Yvonne Chase, PhD, LCSW, ACSW  
President, NASW  
Member, NASW Foundation Board of Directors  
Vice President, IFSW North American Region  
Betsy Vourlekis, PhD, ACSW  
Chair, Pioneer Steering Committee

## NASW FOUNDATION STAFF

Brian Williams, LAPSW, Director  
Kerri Criswell, MSW, Senior Manager, Fund Development  
Ian Walker, BFA, Senior Administrative Assistant

---

# PROGRAM – SATURDAY, OCTOBER 19, 2024 | 9:00AM-3:00PM

- 9:00 AM REGISTRATION & NETWORKING**
- 10:00 AM WELCOME & INTRODUCTIONS**  
**Betsy Vourlekis, PhD, ACSW\***  
Chair, NASW Pioneer® Steering Committee
- GREETINGS**  
**Yvonne Chase, PhD, LCSW, ACSW\***  
President, NASW  
Member, NASW Foundation Board of Directors  
Vice President, IFSW North American Region
- 10:20 AM IN MEMORIAM *including a special tribute to Dr. Bernice Catherine Harper\****  
**Patricia Martin O'Meally, LICSW\***  
Member, NASW Pioneer® Planning Committee
- 10:30 AM STUDENT PANEL: EXPLORING NEW MODELS FOR PROBLEM-SOLVING**  
**Steven Hornberger, MSW\* – Moderator**  
Director, Social Policy Institute, San Diego State University School of Social Work  
**Bernice Lorna Gaspard, MSW**  
Fordham University  
**Carmen Ross**  
MSW Candidate, Howard University  
**Roxy Sprowl**  
MSW Candidate, University of Michigan  
**Ashley Wright**  
Dual Degree MSW/MPH Candidate, San Diego State University
- 11:30 AM HISTORIC PIONEER GROUP PHOTO**  
Photography by Patricia McDougall
- 11:55 AM LUNCHEON**
- 12:40 PM PANEL: ELECTION EVE CHAT**  
**SPEAKERS**  
**Anthony Estreet, PhD, MBA, LCSW-C**  
CEO, NASW  
President, NASW Foundation  
**Julie E. Shroyer, MSW\***  
President & CEO, Wheat Shroyer Government Relations  
**The Honorable Alan Wheat**  
Chairman, Wheat Shroyer Government Relations
- 1:45 PM INTRODUCTION OF 2024 PIONEERS**  
**Kathryn Conley Wehrmann, PhD, MSW\***  
Chair, Pioneer Planning Committee  
Past President, NASW
- 2:45 PM CLOSING REMARKS**  
**Brian Williams, LAPSW**  
Director, NASW Foundation
- \*NASW Social Work Pioneer®*

## KEYNOTE SPEAKERS

**Anthony Estreet, PhD, MBA, LCSW-C**  
**Chief Executive Officer, NASW**  
**President, NASW Foundation**

Dr. Anthony Estreet is currently the CEO of the National Association of Social Workers (NASW) and is a highly esteemed leader in the field of social work. Dr. Estreet, who has more than two decades of experience in the social work profession, has made significant contributions to the field through his academic and professional endeavors.

Dr. Estreet began his career as an adjunct professor at Morgan State University in Baltimore, and later became the MSW Program's chair and a full professor. While at Morgan State, he co-edited a groundbreaking book on African-centered clinical interventions in social work mental health practice. He published over 40 peer-reviewed journal articles on social work education, workforce development and social work practice.

In addition to his academic work, Dr. Estreet has held several leadership positions within the social work profession. He served as vice president of the NASW Board of Directors and as chair of the NASW Alcohol, Tobacco, and other Drugs Specialty Practice Sections and the National Ethics Committee. In addition, he co-chaired a committee tasked with planning and executing an innovative National Social Work Conference.

Dr. Estreet has served as a clinical director, the chief executive officer of a treatment facility and a senior executive consultant. He is the founding president of the



National Association of Black Social Workers' Baltimore Legacy Chapter.

Dr. Estreet earned a bachelor's in science in psychology from Bowie State University, an MSW at Virginia Commonwealth University, a doctorate in social work at Morgan State University and an MBA at the University Maryland-College Park. He is a member of Alpha Phi Alpha, the oldest intercollegiate African American fraternity.



---

**Julie E. Shroyer, MSW**  
**President & CEO, Wheat Shroyer Government**  
**Relations**

Julie E. Shroyer's clients have included health care professional organizations representing the nursing profession, nurse educators, nurse practitioners, social workers, PA educators, addiction professionals, hand therapists, clinical and research professionals, health care systems, patient advocacy organizations, biotechnology companies and foundations.

Shroyer was senior vice president and chief operating officer at Wheat Government Relations (Wheat GR), where she headed up the firm's health care practice for 12 years. Before Wheat GR, Shroyer was a vice president of Capitol Associates, where her clients included health professional associations, medical research coalitions and a large research university. Prior to her work in the private sector, Shroyer spent six years as deputy director of congressional affairs at the American Psychiatric Association, where she worked on mental health parity and reform.

Shroyer got her start on Capitol Hill as a professional staff member for the House Select Committee on Children, Youth and Families, working closely with the chairpersons—then-Congressman George Miller (D-Calif.) and then-Congresswoman Patricia Schroeder (D-Colo.). She continues to develop and maintain her extensive bipartisan network of contacts that includes members of Congress, committee and personal staff, association leaders, and agency executives.



## **The Honorable Alan Wheat Chairman, Wheat Shroyer Government Relations Member of Congress (1983–1995)**

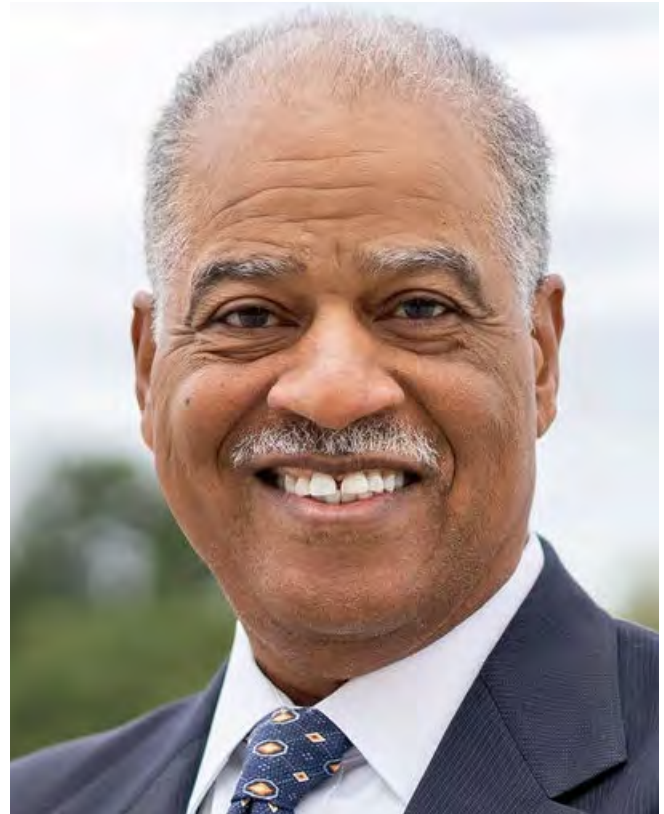
In 1982, at the age of 30, Alan Wheat was elected to the United States House of Representatives. He made history by becoming the youngest African American ever to serve in Congress. His election heralded a new era of politics with African Americans being elected from multicultural and majority white districts.

Congressman Wheat quickly became part of the House leadership by being appointed to the powerful Rules Committee. His work on the Rules Committee allowed him to impact major legislation and develop an extensive and bipartisan network of contacts in Washington.

The *Wall Street Journal* soon hailed Congressman Wheat as a “political star” and *Time Magazine* called him a “bright and able leader for the new generation of African American elected officials.”

Congressman Wheat left the House in 1994 to run for a seat in the United States Senate. He won the primary to become the first minority candidate selected as a major party nominee for statewide office in Missouri. While he did not win the general election, he has continued his career in the public arena.

He served as vice president of government relations for CARE, the international aid organization, then as President Clinton's deputy campaign manager and he later founded Wheat Government Relations. He is currently the chairman



of Wheat Shroyer Government Relations, which focuses on providing support to public service clients. He uses his extensive knowledge of the legislative process to deliver results for member associations, health care groups, nonprofits and other organizations seeking to maximize their voice on Capitol Hill.



# ***CONGRATULATIONS TO THE PIONEER CLASS OF 2024!***

*Your exceptional dedication and hard work have made a lasting impact on the social work profession and the individuals, families, and communities you serve.*

*We are proud to recognize your achievements and celebrate the difference you've made.*

*Thank you for your commitment and inspiration.  
Enjoy this well-deserved honor!*



## STUDENT PANEL SPEAKERS



**Bernice Gaspard** (MSW, 2024, Fordham University) is a licensed master of social work and a recent graduate of Fordham University. She currently works in child welfare, where she monitors

family casework activities related to court-mandated services. Previously, Gaspard provided counseling to at-risk youth in a school setting and plans to continue supporting families in her current role.

Gaspard has also interned at the United Nations, where she served as the secretary for the U.N. NGO Committee on the Rights of Indigenous Peoples and participated in the NGO Committee at the Fordham Institute for Women and Girls. She is passionate about addressing period poverty and is dedicated to ensuring that period products are accessible to every family involved with child welfare.



**Carmen Ross** is a current dual degree master's of social work and business administration at Howard University. Ross' concentration is in community, administration and policy, and her

academic focus is in deepening research on community-centered philanthropy.

Previously, Ross served as the program director of the California Black Freedom Fund, overseeing the distribution of over \$10M in grants to Black-led organizations and raising \$8.1M in funding. Prior to this role, she served as the senior program manager at the Sacramento Region

Community Foundation, working closely with local community-based organizations to enhance educational opportunities for boys and men of color through scholarships, and guiding strategic initiatives for equity-focused grants.

Before transitioning to work with community foundations, Ross engaged in the Salvation Army and Lodi District Chamber of Commerce. She received her bachelor of arts degree in social welfare from UC Berkeley, and outside of her professional pursuits, Ross owns a photography business and enjoys singing, hiking and roller skating to stay active and creative.



**Roxy Sprowl** (Bezhigonoodinkwe) is a citizen of the Red Cliff Band of Lake Superior Ojibwe. She is a first-generation, recent graduate from Michigan State University and received her bachelor of

arts in social work in April 2024. She is currently a master of social work student at the University of Michigan and is a 2024-2025 Child Welfare Program Scholar in the Advanced Standing Program. Sprowl has served several leadership roles at her alma mater, including leading an award-winning research lab regarding racial and ethnic representation in U.S. history textbooks and leading the North American Indigenous Student Organization. Off campus, Sprowl serves as the youngest elected board member on the Michigan Indian Education Council; a national fellow for the Building Communities of Hope Fellowship with the Center for Native American Youth; a

---

mentor for the Indigenous Youth Empowerment Program in Greater Lansing; and is a 2023 National Udall Scholar. Currently, Sprowl is a student assistant in the Native American Affairs and Race Equity Office at the Michigan Department of Health and Human Services (MDHHS) Children's Services Administration. Within her first year, she created the first-ever Native Employee Resource Group at MDHHS. As a former foster youth, Sprowl is a passionate advocate for Indian child welfare and education policy reform. Her advocacy focuses on uplifting the needs and centering cultural connections of Indigenous youth and communities. She is pursuing a career devoted to preserving Indigenous sovereignty, promoting Indigenous visibility, advancing Indigenous leadership, and advocating for Indigenous youth and communities. Sprowl seeks to balance ancestral love and intergenerational trauma for the sake of collective resilience and healing.



**Ashley Wright** earned her BA in psychology with a minor in applied psychology from the University of California, Santa Barbara, where she also competed as an intercollegiate student-athlete in 2019. Her experiences working with diverse populations in school, athletic and intensive outpatient settings during this time period fueled her devotion to serving vulnerable populations and pursuing higher education, as she aspires to establish and operate her own nonprofit in the future.

At San Diego State University (SDSU), Wright serves as co-president of the Graduate Social Work Association (MSW student-liaison organization); a chapter member of

Payments for Placement (P4P) (a national student-led advocacy group); and a board fellow at SURVIVORS of Torture, International, where she is gaining board governance experience. She is an intern at Escondido Union School District, engaging in direct and administrative practice, and a research assistant for SDSU's School of Social Work, studying mental health providers who work with the severely, persistently mentally ill population.

Wright's true passion lies in sport social work (SSW) though, where she is a leading member of SDSU's SSW Workgroup. The workgroup is composed of a team of professors and MSW students that collaborate with SDSU's Athletics Department to spread awareness about the intersection of mental health and athletics, while helping the department achieve its student-athlete support and DEI initiatives.

From witnessing and experiencing injustices in the health and human services field, Wright is committed to dismantling oppressive systems and driving equity and social justice initiatives. Wright is dedicated to ensuring marginalized communities receive the quality care they deserve to lead fulfilling lives. Through her various roles, she aims to promote positive, sustainable systems-level changes and establish her own nonprofit dedicated to creating inclusive environments in sports.

## NEWLY ELECTED PIONEERS 2024



### **Franklin Brooks**

Franklin Brooks, PhD, MSW, LCSW, has been a beacon of advocacy and service in the field of social work both in his home state of Maine and across New

England. His pioneering contributions have inspired many social workers, educators and community service leaders. Throughout his 40-year career, Brooks has been a tireless trailblazer, advocate and champion for the LGBTQ+ community, and he has truly lived the values and ethics of the social work profession. His accomplishments cross micro, mezzo and macro levels of social work practice, and his skills both as a clinician and community organizer have been a great service to the social work profession and to the lives he has positively affected in his home state of Maine.

Brooks has been committed to social work education for his entire career. He taught numerous classes at the University of New England (UNE) School of Social Work as a full-time faculty member, and was also an adjunct faculty at, Boston College School of Social Work and the University of Southern Maine School of Social Work. Brooks guided hundreds of new BSW and MSW graduates into the profession. While at UNE, Brooks was part of the team that obtained a four-year, \$1.4 million HRSA grant for educating and training MSW students in gerontological social work practice. His contributions to social work education have helped shape the next generation of professionals, ensuring a legacy that will long outlive his tenure.

In the early 1990s, Brooks developed training for the Department of Health and Human Services to support caseworkers and child welfare leaders to better meet the needs of LGBTQ+ youth in Maine. In addition, he presented at conferences on the importance of including LGBTQ+ individuals' needs in all professional social work practice interventions. He developed and taught courses

on social work practice with LGBTQ+ people at the undergraduate and graduate levels.

Throughout his career, Brooks has received numerous accolades recognizing his contributions to social work and the broader community. He was awarded a Lifetime Achievement Award in March of 2024 by Equality Maine. He also received the Trailblazers Advocacy Award in 2021 from the Maine Council on Aging. In 2005, Brooks was named the Maine Chapter of the National Association of Social Workers (NASW) Social Worker of the Year. While in his doctoral program at Simmons College, he was the recipient of the Dean's Leadership Award. These awards underscore his long history of advocacy for the LGBTQ+ community and his commitment to social work and the principles of justice, diversity, equity and inclusion.



### **William Neal Brown (1919-2009)**

William Neal Brown, PhD, MSW, was a social work practitioner and educator who began his professional social work career after serving in World War II as a Tuskegee Airman. In 1956, he became the first Black professor at Rutgers University, where he taught for the next 33 years, retiring in 1989.

While working full-time, Brown earned his MSW from Columbia University in 1950. In 1969, he earned his PhD in human growth and development from the City University of New York. In 1967, Brown was listed in *Who's Who in the East*. For many years, Brown was an active member of NASW. In 1969, he was presented with the Social Worker of the Year Award by the North and the South New Jersey Chapters of NASW.

In January 2009, Brown and other living members of the Tuskegee Airmen were honored guests at President Barak

---

Obama's inauguration. Brown died later that year, on April 17, 2009. The American flag that draped Brown's casket and his medals are at the National Museum of African American History and Culture in Washington, D.C.



### **Karen Bullock**

Karen Bullock, PhD, LICSW, FGSA, APHSW-C, is the Louise McMahon Ahearn Endowed Professor in the Boston College School of Social Work and in Global Public Health. She is a LICSW with mental health practice experience and has been a leading force in advancing social work, education and training in health disparities, health equity, serious-illness care, aging and gerontology, hospice, palliative and end-of-life care decision making for the last two decades.

Bullock's trailblazing research and practice focus has championed a meaningful role for social work in the area of hospice and palliative care—now known as serious-illness care—because of the specialized skill set and expertise that intersect with those of physicians, nurses and allied health clinicians on primary care teams.

Bullock grew up in rural North Carolina and graduated from North Carolina State University with a BSW. She received her MSW from Columbia University in New York and her PhD in sociology and social work from Boston University.

She has worked as a social work clinician with diverse racial/ethnic communities and patient populations for over 20 years. In addition to providing inpatient and outpatient services to older adults, as a psychiatric clinician at Hartford Hospital in Connecticut she has studied health equity and end-of-life decision making among Black and Latina/o/x patients since her mother was diagnosed with lung cancer in 1998 and declined hospice care services.

Bullock joined the faculty of North Carolina State University in 2011 as an associate professor of social work before

being named head in 2013. Under Bullock's leadership, social work experienced significant growth in student credit hours and external funding. Bullock directed the unit's transition from a department to a school and led a successful re-accreditation process. In addition, she provided leadership that propelled the school to become a nationally recognized program among the top-ranked schools of social work by U.S. News & World Report.

Bullock was recruited to the position of Louise McMahon Ahearn Endowed Professor in the Boston College School of Social Work and in Global Public Health, where she has been since 2022.



### **William H. Butterfield**

William H. (Bill) Butterfield, PhD, MSW, is known for his expert contributions to behavioral social work, social work technology and homelessness research.

Butterfield authored several articles on behavioral social work at a time when such practice was an emerging modality. His involvement as the editor of Behavioral Engineering from 1972-1986 contributed to the then-innovative and progressive idea of computers and technology in social work. He was ahead of his time in writing "Artificial Intelligence in Computers in Human Services" in 1988.

Butterfield was one of the earliest researchers in social work to focus on homeless families and the growing development of shelter-based services. He created a citywide computerized system for the referral of families to the St. Louis Homeless Services network. In 1990, the Homeless Services network won a \$100,000 award for the city of St. Louis from the Harvard University/Ford Foundation "Innovation in State and Local Governments." He served as a social worker with the U.S. Army during his 33 years of service in the U.S. Army Reserve and retired as a lieutenant colonel in 1989.



### **Norman H. Cobb**

Norman H. Cobb, PhD, MSW, has made trailblazing contributions to the social work profession throughout his career of nearly 40 years as an educator and practitioner. Across his academic career, including more than 30 years at the University of Texas at Arlington, Cobb's teaching, publications and research centered on the theory and treatment of an array of mental health disorders. His experience with professional therapeutic intervention was integrated into his teaching, and his knowledge of mental health theory and practice informed his supervision of students in clinical settings.

In 1993, Cobb developed a two-day multi-session licensing exam preparation workshop providing face-to-face and online licensing workshops for graduate students preparing for their LMSW and LCSW licenses. The program continues today in the form of Cobb Educational Services. More than 2,500 social workers throughout the country have passed the licensing exam with the help of Cobb's preparation classes and related materials. The high pass rates (91%) are due to his practical approach and application of social work skills based on clinical knowledge and practice experience. In addition to his test preparation courses and consultation, Cobb has provided supervision for 200-plus graduates who are required to accrue two years of professional practice in order to sit for their LCSW licensing exams.

Cobb's teaching and mentorship have not been confined to the classroom. He has maintained a part-time clinical practice throughout his career that's kept him abreast of the latest in therapeutic interventions and perspectives. He directed the UTA Mental Health Clinic for 11 years, mentoring students completing their field placements who counseled a wide array of clients. This unique combination of clinical instruction and hands-on practical application of skills has become a model of professional practice that was duplicated at schools of social work across the country.



### **Rachel Crandall-Crocker**

Rachel Crandall-Crocker, LMSW, created the International Transgender Day of Visibility in 2009. Before this the only transgender day was the Transgender Day of Remembrance, a day often commemorated with community memorials: an opportunity to honor trans individuals who had lost their lives for simply being trans. Crandall-Crocker decided that it was time to also celebrate the living. Since its first celebration in 2009, Transgender Day of Visibility has gained massive traction not only domestically but internationally. In 2021, U.S. President Joe Biden was the first American president to proclaim March 31 as Transgender Day of Visibility.

In the spirit of Crandall-Crocker's vision and tireless advocacy work, President Joe Biden said: "To everyone celebrating Transgender Day of Visibility, I want you to know that your president sees you. And we're committed to advancing transgender equality in the classroom, on the playing field, at work, in our military, in our housing and health care systems—everywhere. Simply everywhere. Even with a national proclamation of the special holiday, legislators across the United States have filed hundreds of anti-LGBTQ bills. Clearly there is still much work to be done in guaranteeing that trans voices are heard and protected, and many believe that providing opportunities for visibility is the first step in a greater movement toward equality and equity."



### **King Davis**

King Davis, PhD, MSW, has been a beacon in the world of social justice, illuminating and guiding policymakers, bureaucrats, practitioners, the U.S. Army and students on the mental health realities and needs of all people, but with a focus on the African American community. His groundbreaking report for the state of



---

Virginia, on training for work with individuals who have serious mental illness, was completed while Davis held simultaneous appointments as the John Galt Endowed Professor of Psychiatry and Behavioral Medicine at the University of Virginia, the Medical College of Virginia and Eastern Virginia Medical School. King subsequently was named commissioner of the Department of Behavioral Health and Developmental Services for the Commonwealth of Virginia, serving from 1990-1995. He previously served as Virginia's director of community mental health.

Davis continued to hold both academic appointments and administrative leadership positions when he left Virginia for Texas. At the University of Texas at Austin, he was the executive director of the Hogg Foundation for Mental Health while professor in the School of Social Work, and later was selected for the Mike Hogg Endowed Chair in Community Affairs at the University of Texas, College of Liberal Arts, African and African Diaspora Studies Department. He was the inaugural director of the Institute for Urban Policy and Research Analysis at the university.

Davis' current, unprecedented research focuses on 100 years of admissions to Virginia's Central Lunatic Asylum for Colored Insane, the segregated and only mental hospital for Black patients in the U.S. He has received funding to preserve and digitize thousands of case records. "While the records have thus far revealed little about individual patients, they have, in the aggregate, painted a disturbing picture of the facility's past. And they say much about the history and oppression of institutionalized Black lives." (Britt Peterson, March 29, 2021, Washington Post)



## Enrico De Gironimo

Enrico (Rick) De Gironimo, MSW, has brought great vision to his roles on the NASW Board as well as to his work on the modernization of NASW as an organization. His work started in the early 1980s when he was coordinator of consultation and education for the Community Outreach Program for Senior Adults (COPSA). COPSA was the older-adult mental health services program operated by the University of Medicine and Dentistry of New Jersey, now Rutgers Medical School. Social workers were beginning to take the lead in community mental health and raising the bar for clinical excellence. Needs assessment, psycho-social assessments and family support efforts in the community were key to De Gironimo's work. Services offered by COPSA ranged from psychiatric, family medicine and services to supporting individuals with Alzheimer's disease and related disorders. COPSA developed one of the first day hospital programs in the country focused on actively treating individuals with dementia and supporting their families. Many of the strategies developed at COPSA are still in use in adult day programs and long-term care facilities 40 years later.

Hundreds of medical and allied professions students came through COPSA and trained with the team. In addition to helping to create a solid model program for support and treatment of individuals with dementia at COPSA, De Gironimo was successful in winning a NIMH grant to hold a national conference on aging and dementia entitled "Living as an Older Adult in the 1980s."

Following his work with COPSA, De Gironimo became the assistant director at the Center for Cognitive Rehabilitation (CCR) for residential services at the Rutgers Medical School Department of Psychiatry. Under the direction of Irwin Pollack, MD, a leader in cognitive rehabilitation, the team opened the first community-based residential program in New Jersey, at a time when there were only a few in the country. De Gironimo was instrumental in opening a community residence (Rally House), also

becoming an early expert in cognitive rehabilitation. De Gironimo helped train and manage a team including physical, occupational, speech therapists, psychologists and social workers.

Practitioners from around the state and the country came for training. These were the early days of cognitive rehabilitation, and training was very much in demand. As a true social worker, well versed in systems theory and the person-in-the-environment perspective, De Gironimo and the team at the CCR led the way on developing strategies for families desperately looking for support and care of their loved ones.



### **Diana DiNitto**

Diana DiNitto, PhD, MSW, ACSW, LCSW, AADC, has made pioneering contributions to the social work profession as an academic and policy advocate, focusing on social welfare policy and addiction issues through scholarship, teaching and activism. The eight editions of her social welfare policy textbook, first published in 1983, and one of the first of its kind by a social worker, have been a standard in the field, read by thousands in the study of social work, government/political science, public affairs and sociology. The four editions of DiNitto's chemical dependency textbook (written with C. Aaron McNeece and first published in 1994) have been widely used as well, preparing and inspiring students to engage in this field.

DiNitto has presented testimony to the U.S. Sentencing Commission Testimony on addressing alcohol and drug problems in the criminal justice system. She has drafted alcohol, tobacco and other drug and mental health policy statements that were passed by NASW's Delegate Assembly. In addition, she advocated for better-informed drug policy through the speakers' bureau of the Drug Policy Forum of Texas and has lectured nationally to

prepare instructors to teach about social policy and substance use. She is a fellow of the American Academy of Social Work and Social Welfare and received an honorary doctorate from Tallinn University (Estonia) for her contributions to doctoral social work education.

In 1981, she was a founding member of the Florida School of Substance Abuse Studies. Since 1993 she has been a board member of the interdisciplinary Texas Research Society on Alcoholism and currently serves as president. She has served on the editorial review board of the Journal of Social Work Practice in the Addictions since its inception.

DiNitto has reviewed substance use grant applications for the U.S. Department of Defense, the National Institute of Drug Abuse, and the Substance Abuse and Mental Health Services Administration. She participated in developing the National Institute on Alcohol Abuse and Alcoholism's curriculum project "Social Work Education for the Prevention and Treatment of Alcohol Use Disorders."

DiNitto received her BA from Barry College (now Barry University) in 1971. She received both her MSW (1974) and PhD (1980) from Florida State University (FSU). She was on the faculty at FSU from 1978-1984 and since 1984 has been on the faculty at University of Texas at Austin Steve Hicks School of Social Work, where she is the Cullen Trust Centennial Professor in Alcohol Studies and Education and a Distinguished Teaching Professor.



### **E. Daniel Edwards**

E. Daniel Edwards, DSW, MSW, has had a huge impact on social work services for American Indian/Alaska Native Peoples.

He changed the face of social work practice in many communities, first through direct practice, then as an educator and leader, and finally as an elder. He extended his patient and gentle guidance and mentorship to encourage, inspire and support Native and non-Native students to be part of his vision of culturally relevant and

---

impactful services for American Indian people and communities. With wisdom, compassion and self-deprecating humor, Edwards' influence on social work has been transformative.

Edwards founded, then developed and directed the American Indian Social Work Career Training Program (known as the AI Program) at the University of Utah (UU). After 38 years of teaching at UU, Edwards retired in 2012 and became professor emeritus, where he remains active with the school and the American Indian Ethnic Studies program.



### **Dorothy Faller**

Dorothy Faller, MSW, ACSW, is renowned for her work as an international social work practitioner. This expertise is at the core of her pioneering contributions. She started her social work career as a child welfare caseworker in Oregon, and then became a social services consultant in child welfare and programs for the elderly in Indiana and later a regional social services and fiscal supervisor at the Ohio Department of Human Services.

In the area of international social work practice, Faller was ahead of her time. In 1981, after earning her MSW, Faller's international social work career was launched when she became the executive director of the Cleveland International Program for Youth Leaders and Social Workers. In 1999 she became secretary general and CEO of the Council of International Programs USA until 2002. As secretary general and executive director of the Cleveland International Program for 21 years, Faller has worked with over 150 countries, and over 500 individuals, providing long-term internships in social work careers and training, both in the U.S. and overseas. Her training programs include cross-cultural awareness and values, conflict resolution, substance abuse prevention and fundraising.



### **Santos Hernández**

Santos Hernández, PhD, MSW, is emeritus dean and emeritus professor at the University of Texas at Arlington (UTA). He has been a social worker and social work educator for over 45 years. With his career spanning academic appointments with nine universities, two deanships, two lifetime achievement awards, leadership of social work professional organizations, countless accolades and numerous firsts, Hernández has been a notable pioneer in social work.

As a Ford Foundation Leadership Development Fellow, Hernández worked with the Washington, D.C., office of the Mexican American Legal Defense and Educational Fund, where he helped to organize support for the expansion of the Voting Rights Act to protect language minorities from voting discrimination. He then worked with the Denver Public Schools, where he joined the Colorado Association for Bilingual Bicultural Education in a successful campaign to mandate bilingual education in public schools; Colorado was one of the first U.S. states to implement this.

Throughout his career, Hernández was among the first few Mexican Americans hired in many institutions where he worked. During his time as dean at two different institutions, he was the highest-ranking Hispanic academic administrator. As one of few Mexican American or Latinx deans in social work, he frequently provided mentoring to aspiring Latinx educators, students and social workers who expressed pride in his impactful positions.

As dean at UTA, Hernández strengthened the school's distance education offerings. He spearheaded the further development of a dual-degree PhD program with the Universidad Autónoma de Nuevo León in Monterrey, Mexico—the only binational, dual-degree PhD program in social work, granting degrees from both institutions. It was recognized by SACS as a model program.



### **Charles E. Lewis Jr.**

Charles E. Lewis Jr., PhD, MSW, is the founding director of the Congressional Research Institute for Social Work and Policy. Lewis also served as deputy chief

of staff and communications director for former Congressman Edolphus “Ed” Towns (D-N.Y.). He was instrumental in creating the Congressional Social Work Caucus with the idea that it would be a platform to allow social workers more of a voice in Congress.

While on Capitol Hill as the staff coordinator for the caucus, Lewis organized briefings for NASW, the Council on Social Work Education and the Society for Social Work and Research. His work has significantly impacted the representation of social workers in Congress, providing them with a platform to voice their concerns and advocate for policies relevant to the profession and responding to critical social welfare issues as they arise. Lewis has inspired many social workers to pursue careers in political social work. He authors a blog about political social work that is widely read by professionals in the field, all across the country.



### **Samuel Bernard Little**

Samuel Bernard Little, PhD, MSW, is known as a powerful advocate for equitable U.S. public housing. As founding president of the National

Alliance of Resident Services in Affordable and Assisted Housing (NAR-SAAH), Little served the organization for 20 years. Through NAR-SAAH he has provided technical assistance to employees of resident services and members of resident councils to help shape national housing policy, expand partnerships with community agencies, leverage funds to support resident programs, and address impacts of changing economic conditions and shifting political priorities.

Little is a seasoned administrator. He has served with distinction at three large public housing authorities in Baltimore, Philadelphia and Washington, D.C. Additionally, Little served from 1974-1992 in the Baltimore mayor’s Office of Manpower Resources as administrator of family services; and as associate dean for field education at the University of Maryland School of Social Work (2013-2023). He also served as an adjunct faculty member for the Howard University School of Social Work for 10 years. Although retired from these academic roles, he continues to work with faculty and students on research related to improving the quality of life in public housing. His research interests and publications have focused on public housing, homelessness and field education.



### **Louise Thomson Locker**

Louise Thomson Locker, MSW, LCSW, is a collaborative innovator working as a therapist, life coach and co-creator of socially relevant initiatives. With more

than 40 years of experience, she brings a wealth of wisdom, deep concern, creative problem-solving and passion to her work. Best known as the founder of Elf Louise, she is one to take a dream, infuse it with love and determination, and inspire others to give it their all, too. Locker estimates that the Elf Louise Christmas Project has given toys to more than one and a half million children who otherwise might not have gotten anything on Christmas morning.

She is an expert in helping people who are beginning anew, as well as in helping people live as full a life as possible in the face of challenging and stressful times. Resiliency, transparency, gratitude, purpose and adaptability are core concepts she lives with and helps others with as well.



## Louis Lowy (1920-1991)

Louis Lowy, PhD, MSW (1920-1991), has been lauded as an international social work educator and gerontologist who advanced the research and practice of

gerontological social work and social work with groups, and raised awareness of the promise of social work among students and practitioners worldwide. As with other prominent German-born social workers who were exiles or survivors of the Holocaust, Lowy contributed to the restoration of social work education in Germany and other Nazi-occupied countries.

In 1957, Lowy joined the faculty of the Boston University School of Social Work. He rose through the ranks to become full professor of social work (1966) and professor emeritus (1985). He cofounded and co-directed the interdisciplinary Boston University Gerontology Center (1974-1977), which later named its academic program and scholarship fund in his honor: the Louis Lowy Certificate in Gerontological Studies (1979) and the Louis Lowy Fund in Gerontology and Social Policy (1985). Lowy advanced research and policy in gerontology as principal investigator of numerous federally funded and foundation-funded research projects, consultation with government agencies, service on editorial boards and participation on doctoral dissertation committees for universities throughout the world. Lowy was active in NASW and served as president of the NASW Eastern Massachusetts Chapter (1961-1963) and as a board member (1965-1967).

Lowy also served as founding president of the Massachusetts Association of Gerontology (1975), and contributed to the development of programs and services for older persons through extensive service in community-based organizations and city and state agencies. His national and international leadership in gerontology included voluntary positions in professional associations, such as the Council on Social Work Education, the Gerontological Society and the International Association of Schools of Social Work; and with government programs, such as the

National Council on Aging the United Nations World Assembly on Aging, and the British Royal Society of Health. Lowy served as the Massachusetts state delegate to the White House Conference on Aging in 1961, 1971 and 1981.



## Goutham M. Menon

Goutham M. Menon, PhD, MSW, MBA, has been innovative in the social work field, blazing trails and effecting meaningful change by using technology

and communications to increase access to services and educational opportunities for vulnerable individuals and families in highest need. His commitment to building opportunities for a better system to serve the needs of our talented but disadvantaged members of society has not only transformed individual lives but has also contributed significantly to the advancement of social work practice, policy and research on a broader scale.

Considered an expert and an innovator/disruptor in information and communication technologies in social services and higher education by his peers, Menon has presented papers at numerous national and international conferences over the years and has published extensively. His scholarship has focused primarily on e-therapy, electronic advocacy, social work education, technology and international social work. Since 2023, he has served as CEO of the Network for Social Work Management.

Menon has also published in the areas of mixed methodologies, ethics, mental health and distance education. He has published six edited books, several peer-reviewed articles, serves on editorial boards, and is currently editor-in-chief of Best Practices in Mental Health. He has received over \$3.2 million in federal and foundation grants for training social work students in behavioral health at the various institutions he has served.





### **M. Patricia O'Brien**

The pioneering efforts of Dr. M. Patricia O'Brien, PhD, connect academia, advocacy and social reform through transformative feminist practice. Her

passion throughout her career has been securing social justice for the most disadvantaged, in particular women. Feminist practice comprises much of the focus of O'Brien's research and service. In 1999 and 2002, she received feminist scholarship awards from the Council on Social Work Education Women's Commission.

O'Brien is a pioneer in research on feminist practice and carceral corrections, with an emphasis on advocacy and transformative social justice. As one of the earliest researchers in social work to focus on incarcerated women, O'Brien's research was the first of its kind. Her groundbreaking dissertation research pioneered work on the "hidden population" of women in prison. This work also zeroed in on the strengths of women and their pathways in and out of incarceration, with a focus on those who made a successful exit from prison, rather than the typical approach or view of expected recidivism.



### **Kathleen Pottick**

Kathleen Pottick, PhD, MSW, MA, started in social work as a group worker and caseworker before beginning her long career as an educator, researcher and

higher education administrator. Early on, Dr. Pottick worked in agencies and programs in community mental health and services for older adults. Pottick began her academic career in 1981 as an assistant professor at the Rutgers University School of Social Work, with a joint appointment beginning in 1987 at the Rutgers Institute for Health, Health Care Policy, and Aging Research. At Rutgers, Pottick rose through the ranks to ultimately being named a full professor and acting dean. Her teaching, research and publications over the years led to

her being recognized not only within Rutgers University and the state of New Jersey but also nationally and internationally.

Pottick is a highly prolific social work researcher and scholar, as well as an award-winning classroom instructor and faculty mentor. Her articles have appeared in numerous social work, psychiatry, psychology and mental health journals. The bulk of her research has focused on better understanding the dynamics of, and barriers to, the provision of effective mental health services to children and adolescents, focusing especially on racial and ethnic disparities.

Pottick has frequently stated that her goal is to bring the values and practicality of her background as a social worker to her research on issues in the health care industry that may be impeding the delivery of effective health and mental health services to children and adolescents. She has been a leader in bringing together colleagues from various mental health disciplines to address research questions about complex social problems, providing for more complete answers than studies conducted under only one methodology or philosophy.



### **Susan P. Robbins**

Susan P. Robbins, PhD, MSW, LCSW, is regarded as an expert in forensic social work, an area in which her activity has included mediation, mediation training

and providing expert witness testimony in cases that involve false allegations of sex abuse and substance abuse. She has been a mediator with the Harris County Dispute Resolution Center for over 40 years and assists them with training new mediators. She also evaluates cases involving allegations of sexual abuse and provides expert witness testimony related to child sexual abuse and proper forensic interviewing of children. She has trained caseworkers, social workers and supervisors for Children's Protective Services in Texas, Oklahoma and New Mexico



---

and has been qualified as an expert in Texas, Washington D.C., Illinois, Idaho and Arkansas.

Robbins is an experienced social work practitioner, researcher and educator. She is a licensed clinical social worker (LCSW) and holds MSW and PhD degrees. After receiving her PhD in 1980, Robbins became a faculty member at the University of Houston Graduate College of Social Work in Houston. She continues to be engaged in the part-time private clinical practice that she launched in 1980. In addition, over the years since receiving her PhD, she has engaged in research and consultative activities with a wide range of social welfare and human services organizations.

Over the course of her career, Robbins has been a highly productive scholar and researcher. She has published extensively in professional journals and has authored and co-authored several book chapters. She is the first author of a widely adopted human behavior textbook and she has frequently been invited to contribute chapters to books being developed by other authors. She served as editor in chief of the Journal of Social Work Education.



### **Michael Sherraden**

Michael Sherraden, PhD, MSW, is a teacher, researcher and policy specialist. He is the George Warren Brown Distinguished University Professor at

Washington University in St. Louis and the founding director of the Center for Social Development (CSD) at Washington University's Brown School.

Sherraden is renowned for his work to create and experimentally test social innovations that improve social and economic well-being, especially for the marginalized. He is known for proposing and developing asset-based policy, which makes assets available to everyone with progressive funding. His contributions to social policy and social work have been domestically and internationally

transformative. He was on the founding leadership committee of Grand Challenges for Social Work.

Through his dissertation on the Civilian Conservation Corps and two volumes edited with Donald Eberly, "National Service" (1982) and "The Moral Equivalent of War?" (1990), Sherraden presented the potential of civic service as a framework for facilitating successful transitions to adulthood. His work helped create AmeriCorps, and he attended the White House signing ceremony for the enacting legislation. Sherraden organized and sponsored numerous convenings on civic service, including the first global research conference on the subject, in 2002 in Buenos Aires, Argentina, and a 2015 United Nations meeting on international service.

Sherraden's asset-based development policy formed the nucleus of his seminal 1991 book "Assets and the Poor" and has had far-reaching policy implications. President Bill Clinton mentioned Sherraden's work in two State of the Union addresses, and President George W. Bush included elements of it in his campaign platform. Subsequent co-edited books on this topic are "Inclusion in the American Dream" (2005), "Asset Building and Low-Income Families" (2008), "Asset-Building Policy and Innovations in Asia" (2014) and "Inclusion in Child Development Accounts" (2020). At present, seven U.S. states and several other countries have enacted universal child account policies, all informed by research and advising from CSD.



### **Julie E. Shroyer**

Julie E. Shroyer, MSW, has dedicated her social work career to improving the lives of individuals, groups and communities through social work policy practice. She is a skilled advocate, leader and negotiator. Shroyer is president and CEO of Wheat Shroyer Government Relations, a public service and health-oriented federal advocacy firm that she founded in 2021 in partnership

with former Congressman Alan Wheat. Shroyer has more than 35 years of federal health policy experience, including service on Capitol Hill, and in senior positions in the nonprofit and private sector. Shroyer is a respected advisor to congressional and presidential campaigns, and she is sought after for her recognized expertise in health and mental health care public policy.

She has been a strong proponent of inspiring social workers to seek public office as a powerful means of applying social work training and values to policies that touch many lives and impact our profession.



### **Kimberly J. Strom**

Kimberly Strom, PhD, MSW, is a Distinguished Professor of Ethics and Professional Practice at the University of North Carolina at Chapel Hill and holds the first, and to date only, endowed professorship in ethics in the field of social work. Strom is an internationally recognized educator, trainer and scholar who specializes in the interpretation of professional standards to the complexities of contemporary practice in social work and other fields. She is the International Federation of Social Workers ethics commissioner for North America and has been an ardent member of NASW for over four decades.

Strom conducted a groundbreaking study investigating ethics complaints filed with NASW in the decade preceding a significant expansion of the NASW Code. That research led to cited publications that shed light on the processes, allegations, findings and consequences of social work misconduct. For 25 years, Strom co-authored the best-selling “Direct Social Work Practice,” using case-based videos and practical exercises.

In recent years, Strom has been active in international research and consultation. For example, she worked with the Georgia Association of Social Workers (funded by USAID) on the development of ethics accountability

processes, and a subsequent project on performance appraisal tools for the emerging area of school social work. As part of a multinational research team in partnership with the IFSW, Strom issued timely and relevant findings and guidance about the global impact of the COVID-19 pandemic. An article she co-authored, on the invisible ethics of research, is the most-read article in the history of the European Journal of Social Work. It has also been translated into Ukrainian.

In addition to her role as a full professor at UNC-Chapel Hill, Strom has held numerous university-level leadership roles, including director of the UNC Academic Leadership Program and founding director of the UNC Office of Ethics and Policy. This expertise, alongside her research in moral courage, has led to teaching engagements on authentic leadership for deans and directors in the U.S. (CSWE), Kosovo, Bosnia and Herzegovina, and Saudi Arabia. As a member of the European Association of Social Work Research, she is a co-convenor of webinars and the special interest group on the ethics of research and the research of ethics.



### **Dexter R. Voisin**

Dexter R. Voisin, PhD, MSW, currently serves as dean of the Case Western Reserve University Mandel School of Applied Social Sciences and as president of the National Association of Deans and Directors of Schools of Social Work (NADD). He was an early pioneer in providing clinical services for people with co-occurring HIV, drug use and mental health problems at a time when people faced stigma and often were prevented from accessing necessary services. His research today explores broader structural causes of violence and health disparities that disproportionately impact Black/African American youth and adults.

Voisin was elected president of the NADD in 2023. Additionally, he was inducted as a fellow into the American

---

Academy of Social Work and Social Welfare, where he currently holds leadership positions and formerly served on Board for the Society for Social Work Research. He was appointed by Gov. Pat Quinn to the Illinois African American Family Commission and the Illinois Statewide Committee for Juvenile Justice Programs' Disproportionate Minority Contact Subcommittee.

Consistent with his lifelong anti-racism work, Voisin was selected as the 2020 Carl A. Scott Memorial Lecturer by the Council on Social Work Education's Commission for Diversity and Social Justice. His presentation on community and structural violence advanced the lifelong work of Dr. Carl Scott, a NASW Pioneer.



### **James Wayne**

James (Jim) Wayne, LCSW, BCD, was the first social worker with an MSW elected to the Kentucky state legislature. He began his journey into policy and

politics as a legislative assistant to a United States Congressman from 1974 to 1976. He is now an established and respected leader in all aspects of social work in the state, from politics to psychotherapy.

From 1991-2019, as a Kentucky state representative, Rep. Wayne served the people of Louisville's district 35. He represented the social work voice in committee hearings and on the House floor. During his renowned tenure of almost three decades, Rep. Wayne held important positions, including chairing the state Poverty Commission and the House Committee on Poverty.

Rep. Wayne was highly regarded as a state leader by both political parties as "the conscience of the General Assembly." Wayne focused on issues ranging from state tax reform to protecting vulnerable Kentucky children and youth from sex abuse. He championed the Affordable Housing Trust Fund, which led to over 10,000 homes in the state being built for low-income residents. He

sponsored and/or passed legislation for campus safety, education, public health, LGBTQ+ rights, gun safety and protection of workers. He was the only licensed mental health professional in the Kentucky State House of Representatives during his tenure. He also holds the record for the longest career in the General Assembly for a licensed social worker.

Based on his ongoing support of mental health services and practice, Wayne was the founder of the Wayne Corporation and of the Institute for Advanced Psychotherapy at Loyola University Chicago School for Social Work. Wayne Corporation facilitates Employee Assistance Programs across the state for over 80,000 employees and their families. Following his retirement from the legislature, Wayne was instrumental in creating full scholarships for clinical social workers and other psychotherapists at the Institute for Advanced Psychotherapy.

## **NASW SOCIAL WORK PIONEERS®** *(elected through June 2024)*

Azile Aaron  
Ann A. Abbott  
Edith Abbott  
Grace Abbott  
Mimi Abramovitz  
Barry Adams  
Bess Adams  
Frankie Adams  
Margaret Adams  
Opal Adams  
Jane Addams  
Rafael Aguirre  
Frederick Ahearn  
Ron Aldridge  
Chauncey A. Alexander  
Winona Carglye Alexander  
Ada McCrackan Allen  
Frances M. Allen  
Josephine A.V. Allen  
Margaret Allen  
Glenn Allison  
Jeane W. Anastas  
Delwin M. Anderson  
Joseph P. Anderson  
Georgia Anetzberger  
Hermila Anzaldua  
Mildred Arnold  
Arnold Auerbach  
Helen Cloud Austin  
Kitty Clyde Austin  
David Austin  
Lucille Austin  
Mary Austin  
Sarah Austin  
Sonia Grace Austrian  
Margaret Bagley  
Darlyne Bailey  
Gary Bailey  
Edith M. Baker  
Velma Banks  
Kate Barnard  
Eleanor Barnett  
Janie Barrett  
Lawanna Renee Barron

Richard P. Barth  
Sidney Barthelemy  
Harriett M. Bartlett  
Ruth Bartlett  
Sara Barwinski  
Charles W. Bates  
Mark Battle  
Peter Bauer  
Gerald Beallor  
William Bechill  
Bertram Beck  
Francis Beck  
Aaron Beckerman  
Gemma Douglas Beckley  
Samira K. Beckwith  
Clifford Whittingham Beers  
Lula Behl  
Donald Beless  
Merrilyn Belgium  
Grace W. Bell  
Virginia Bellsmith  
Sidney Berengarten  
Barbara Berkman  
Tessie D. Berkman  
David A. Berns  
Saul Bernstein  
Margaret Berry  
Gary M. Bess  
Mildred Bethea  
Joseph J. Bevilacqua  
Jane Bierdeman-Fike  
Pearl Bierman  
Charline Birkins  
Herbert Bisno  
Janet E. Black  
Phyllis Black  
Clark W. Blackburn  
Eileen Blackey  
Mary Blake  
Margaret Blenkner  
Susan Blumenfield  
Werner W. Boehm  
Richard Boettcher  
Paul Bollwahn

Ballington Booth  
Maud Ballington Booth  
Opal Boston  
George Brager  
Martha Branscombe  
Sophonisba Breckinridge  
Risa Breckman  
Frances Coyle Brennan  
Katherine Briar-Lawson  
Ann Brigham  
Betty Broadhurst  
Elaine Brody  
Myrtle Brooke  
Franklin Brooks\*  
Eddie F. Brown  
Eula Brown  
Katherine Brown  
William Neal Brown (1919-2009)\*  
Patricia Brownell  
Grace Browning  
Bruce Donald Buchanan  
(1954-2020)  
Karen Bullock\*  
Ann Burack-Weiss  
Hobart Burch  
Helen Burke  
Eveline M. Burns  
Deanna Lott Burrell  
Pauline S. Bushey  
Katharine V. Byers  
William H. Butterfield\*  
Shirley Buttrick  
James Callicutt  
Elwood W. Camp  
Ida M. Cannon  
Mary Antoinette Cannon  
Iris Carlton-La Ney  
Amanda Carmichael  
Phyllis Caroff  
Kenneth Carpenter  
Margery P. Carpenter  
Lewis Carr  
Genevieve W. Carter  
Helen Cassidy-McGrail

Elizabeth (Betsy) Cauble  
Ada Causey  
Jay J. Cayner  
Hank Cecil  
Esther Chachkes  
Sandra Chaiken  
Harris Chaiklin  
Fern Chamberlain  
Clarke Chambers  
Diana Ming Chan  
Susan Chan  
Rosemary Chapin  
Millie McClelland Charles  
Yvonne Marie Chase  
Chia-Chia Chien  
Steven Chough  
Elizabeth J. Clark  
Marcelle Clark  
Pearl Clark  
Charlotte Clarke  
Sylvia Clarke  
Norris Class  
Richard Cloward  
Norman H. Cobb\*  
Eleanor Cockerill  
Darla Spence Coffey  
Ethel Cohen  
Nathan E. Cohen  
Robert H. Cohen  
Ruth Cohen  
Wilbur J. Cohen  
Ira Christopher Colby  
Elma Phillipson Cole  
Jane Collins  
Regina Collins  
Allene Colvin  
Elaine Congress  
Barbara Conniff  
Robert Connolly  
Sister Ann Patrick Conrad  
Kathryn Conroy  
Joan Bonner Conway  
Eileen Corrigan

Rev. Bernard J. Coughlin (1922-2020)	Rose Dobrof	Ruth Fizdale	M. Robert Gomberg
Claudia Coulton	Frederica Chase Dodd	Marilyn Flynn	Catherine Goodman
Ruth Cowin	Dorothea Dolan	Homer Folks	Leonard Gordon
Cordelia Cox	James Donnelly	Lois Foster	Natalie Gordon
Shirley E. Cox	Michael J. Dowling	Zelda Foster	William Gordon
Lillian B. Coy	W.E.B. Du Bois (1868-1963)	E. Aracelis Francis	Sol Gothard
Grace L. Coyle	Wayne D. Duehn	Cynthia Franklin	Ruby Morton Gourdine
Elvira Craig de Silva	Elizabeth Wichers DuMez	E. Franklin Frazier	Lester Granger
Myra W. Crenshaw	James Dumpson	Anne Freed	Irene Grant
Sandra Edmonds Crewe	Patricia Duncombe	David French	Donald Granvold
Rachel Crandall-Crocker*	Loula Dunn	Louise Frey	Susan W. Gray
Roger Cumming	Arthur Dunning	Richard W. Friedman	Roberta Graziano
Herman Curiel	Suzanne Dworak-Peck	Dorothy Fritz	Jean Greenberg
Vilona P. Cutler	Ivor J. Echols (1919-2000)	Teresa (Terrie) A. Fritz	Mary Pender Greene
Paul D'Agostino	Golda Edinburg	Rosemary Funderburg	Roberta Rubin Greene
Michael R. Daley	Joyce Edward	Theodore Paul Furukawa	Harry Greenstein
Dorothy Bird Daly	E. Daniel Edwards*	Colleen Galambos	Judith Gresham
Bess Dana	Richard L. Edwards	Maeda J. Galinsky (1934-2019)	Ethel Griffith
Margaret Daniel	Ophelia Egypt	Joseph Gallegos	Lauretta Grill
Fran Danis	Marian Elder	Josephine Weil Gandelman	James Gritter
Rudolph Danstedt	Kathleen Ell	Alejandro Garcia	Linda Grobman
Gerson David	Wanda Ellingson	Teresa Gardian	Howard Gundy
Alice Taylor Davis	Doreen Elliott	Diana R. Richmond Garland (1950-2015)	Howard Gustafson
Edith Davis	Diane E. Elze	Annette Garrett	Nellie Gustafson
John Eldon Davis	Dorothy Emerick	Beatrice Garrett	Cathryn Guylar
King Davis*	Ruth Emerson	Charles D. Garvin	Margaret Hagan
Patricia Wood Davis	Richard A. English	Frances Gautieri	Harold Hagen
Philip Davis (1876-1951)	George Engstrom	Sheldon Gelman	Raleigh Hairston
Rebecca T. Davis	Paul Ephross	Carel Germain	Leroy Allen Halbert
Ruth Davis	David E. Epperson	Hali Hansuli Giessler	Gordon Hamilton
Mary Day	Joshua Epstein	Rosa Gil	Helen Hamlin
Teresa DeCrescenzo	James Evans Jr.	Jeanne Gill	Marjorie Brittain Hammock
Ada E. Deer	Hans Falck	Mary Gillis	Maurice Hamovitch
Enrico (Rick) De Gironimo*	Dorothy Faller*	Leon Ginsberg	Mary Hannick
Peter Delany	David Fanshel	Mitchell Ginsberg	John Hansan
Frederick Delliquadri	Fedele Fauri	Maria Elena Girone	Anita S. Harbert
Ronald Dellums	Barbara Feinstein	Mariah Fenton Gladis (1948-2018)	Lynn Hardesty
Louis DeMoll, Jr.	Ronald Feinstein	Barbara Glaser	Isadora Hare
Harold Demone	Albert Feldman	Douglas Glasgow	Bernice Harper
Karl DeSchweinitz	Frances Feldman	Esther Glasser	Dorothy V. Harris
Elizabeth DeSchweinitz	Anne Fenlason	Melvin Glasser	Ella Harris
Mary DeShazo	Virginia Fenske	Elizabeth Goddard	Jesse Harris
Henrietta DeWitt	Sara A. Collins Fernandis	Robyn Golden	Esther Harrison
Ismael (Andy) Dieppa	Mose Firestone	Mary Funnye Goldson	Ann Hartman
Miriam Dinerman	Sylvia Firestone	Dora Goldstine	Zafar Hasan
Diana DiNitto*	Joel Fischer		Eulene Hawkins
	Helen A. Fisher		Lois Hayes

*The Future Is Now: Charting a Course for Social Justice for All*

---

George E. Haynes	Adelaide Jess	Lela Kinney	Nathan Linsk
Karen S. Haynes	Jeanette Jewett	Sarah V. Kirk	Harold Lipton
Lynne Healy	Adeleine Johnesse	Sara Kirkpatrick	Samuel Bernard Little*
Dorothy Height	Arlie Johnson	Constantine Kledaras	Clare Lloyd
Mary Hemmy	Betty Johnson	Marge Klein	Louise Thomson Locker*
Carmen O. Hendricks	Cernorial Johnson	Ruth Knee	Sayde L.M. Logan
Barbara Henley	Geneva Johnson	Kathryn Koehler	Gwendolyn Loper
Betty Hepner	Jessie Johnson	Irene Kohl	Rebecca A. Lopez
Santos Hernández*	Leland Johnson	Elmre Kolke	Norman Lourie
John D. Herron	Hubie Jones	Gisela Konopka	Maria Maltby Love
Grace Hewell	Norma Gray (Cindy) Jones	Sanford L. Kravitz	Fern Lowry
Henry Hibbs	Richard L. Jones	Colonel Edward F. Krise	Louis Lowy (1920-1991)*
Martha Hickerson	Shirley Jones	Dove Kull	Elizabeth Lucas (1895-1986)
Joyce A. Higashi	Terry Jones	Paul A. Kurzman	Ellen Luepker
Jessie Donaldson Hodder	Virginia Jones	Paul Kusuda	Geneva Lundberg
Marguerite Hodge	Catheleen Jordan	Dorothy Lally	Abraham Lurie
Richard Alan Hoefer	Sr. Mary Vincentia Joseph	Josephine R. Lambert	Mark W. Lusk
Jane Hoey	Mildred Joyner	Warren Lamson	Claire Lustman
Joe Hoffer	Guy Justis Sr.	Esther Jones Langston	Dorothy Lynch
Gertrude Hoffman	Alfred Kadushin	Mary Langton	Rufus Sylvester Lynch
Margaret Hoffman	Alfred J. Kahn	Mary Larounis	Patti Lyons
M.C. (Terry) Hokenstad	Mitchell Kahn	Neota Larson	Anita Mackey
Mary Catherine Jennings Holden	Rosalie Kane	Virginia Laurence	Harry J. Macy
Mary Holland	Helen Kapiloff	Madeleine Lay	Maryann Mahaffey
Florence Hollis	Sudarshan Kapoor	Luna Leach	Mildred Mailick
Martha Hayden Kendall Holmes	Virginia Karl	Grace Lebow	Betty Reid Mandell
Reva Holtzman	James Karls	Barbara Lee	Lawrence Mandell
Harry Lloyd Hopkins	Arthur Katz	Ken Lee	Wilma Mankiller
June Gary Hopps	Kate Katzki	Larry Lee	Susan Mankita
Steve Hornberger	Manuel Kaufman	Peter C.Y. Lee	James Martin
Charles R. Howard	Evelyn Kays-Battle	Porter Lee	Seldon Martin
Sara Hudspeth	Val Keating	Leslie Leighninger	Patricia Martin-O'Meally
Edna Huges	Alan Keith-Lucas	Todd Lennon	Dale Masi
Nancy A. Humphreys	Frances Kellor	Eileen Lester	Mary Matthews
Marquerite Hunt	Eileen Kelly	Carl G. Leukefeld	Jean Maxwell
Maurice Hunt	James J. Kelly	Irving Levin	Nazneen Sada Mayadas
Florence Huntsinpillar	James R. Kelly	Louis Levitt	Ruth W. Mayden
Ann E. Hutchings	Katherine Kendall	Charles Levy	Robert A. Mays
Laurin Hyde	David Kennedy	Walter J. Levy	Elizabeth McBroom
Tsuguo (Ike) Ikeda	John (Jay) Kenney	Charles E. Lewis Jr.*	Mary L. McCarthy
Ruth F. Insel	James Kern	Harold Lewis	Angelo McClain
Virginia Insley	Paul Keve	Myrna Lewis	Hortense King McClinton
John Jacob	Shanti Khinduka	Ronald Lewis	Sandy McCormick
Haskell Jacobs	John Kidneigh	Ruth Lewis	John McDowell
Sister Mary Paul Janchill	Ken Kindelsperger	Florence Lieberman	Jane McKaskle
Mary Jarrett	C. W. King	Eduard C. Lindeman	Dorothy McKay
Ina Javellas	Charles King	Inabel Lindsay	Megan McLaughlin

---



Kate McMahon	George Nickel	Norman Polansky	Elizabeth Healy Ross
Georgia McMurray	George Nishinaka	Jeanette Polito	David Roth
Marie McNabola	Harold Nitzberg	William Lawrence Pollard	Elaine Rothenberg
Peter McNelis	Julie Ann Niven	Kathleen Pottick*	Jack Rothman
Ruth G. McRoy	Julia Norlin	Rose Praisner	Margaret Rowe
William Meezan	Lillie Norlin	Elizabeth R. Prichard	Maurice Russell
Goutham M. Menon*	Alex J. Norman	Charles Prigmore	Margaret Ryan
Carol Meyer	Helen Northen	Mary Proctor	Scott D. Ryan
Henry Meyer	Abraham Novick	William Pugh	Beatrice Sachs
Joseph Meyers	M. Patricia O'Brien*	Jean Kathleen Quam	Janet Sainer
Barbara Mikulski	Carrie O'Connor	Mary Ann Quaranta	Elizabeth Pathy Salett
Lillian C. Milanof	Katherine Oettinger	Sherman Leon Ragland	Betty Sancier
Friedhilde H. Milburn	Lynn Ohrenstein	Salome Raheim	Ann Sand
Jerome G. Miller	Daniel O'Keefe	Juan Ramos	Charles Sanders
Nancy D. Miller	Julia Oliver	Jeannette Rankin	Virginia Sandifer
John Milner	Henry Ollendorff	Lydia Rapoport	Annie Sandusky
Anne L. Minahan	Ben Orcutt	Claudia Rappaport	Rhoda Sarnat
Steven A. Minter (1938-2019)	Phyllis Osborne	Frank B. Raymond	Virginia Satir
Eunice Minton	Masaru Oshiro	Frederick G. Reamer	Beatrice N. Saunders
Julia Mitchell	Roland Ostrower	Margaret Reeves	Marlene Anita Saunders
Melinda A. Mitchell	Shirley Otis-Green	Jeanette Regensburg	Odessa Sayles
Terry Mizrahi	Sebastian Owens	Helen Rehr	Anna Scheyett
Brij Mohan	Helen Padula	Betty Reichert	Philip Schiff
Catherine Moloney	Lynette Kahekili Kaopuiki	Kurt Reichert	Delores Schmidt
Joseph (Joe) T. Monahan	Paglinawan	William Reid	Alvin Schorr
Mary Jo Monahan	Richard Kekumuikawaoieola	John Reida	Charles Schottland
William Monahan	Paglinawan (1940-2018)	Helen Reinherz	Dorothy Schroeder
Linda S. (Haviland) Moore	Antonia Pantoja	Stanley G. Remer	Edith Schulhofer
Royal Morales	Catherine Papell	Bertha Reynolds	William Schwartz
Essie Morgan	Beatrice Park	Ruth Reynolds	Will Scott
Patricia G. Morisey	Sherry M. Parrish	Beryl Carter Rice	Mildred Scoville
Eleanor Morris	Delores L. Parron-Ragland	Elizabeth Rice	Martha K. Selig
Laura Morris	Joseph E. Paull	Mary Richmond	Sabina Shalom
Robert Morris	Raymond Peacock	Monte Riley	Barbara Wenstrom Shank
Mereb Mossman	Dorothy Pearson	Harriett Rinaldo	Ruth Shaw
David Moxley	Wilma Peebles-Wilkins	Virginia Ritter	Bradford W. Sheafor
John Mulroy	Elaine Pinderhughes	Susan P. Robbins*	Leslie Shellhase
Carlton Munson	Frances Perkins	René Robichaux	Vicki L. Shepard
Janet Munt	Helen Perlman	Eunice Robinson	Michael Sheridan
Campbell Murphy	Ruby Pernel	Virginia Robinson	Edmund Sherman
John Prentice Murphy	Irma Perry	John Myron Rockmore	Wendy R. Sherman
Elliot Naishtat	Travis Peterson	Reva Rockmore	Michael Sherraden*
Alicia Najera (1961-2021)	Susan Pettiss	John Romanyshyn	Charles Shireman
Bernard Nash	David Phillips	Jay Roney	Louise Proehl Shoemaker
Linda Nee	Helen Pinkus	Alex Rosen	Myrne Shoemaker
Alfred Neumann	Georgia Pinnick	Gary Rosenberg	Barbara Shore
Christine Nichols	Louise Pittman	William Rosenblatt	Genevieve Short

*The Future Is Now: Charting a Course for Social Justice for All*

---

Jerry Shroder	Kimberly J. Strom*	Barbara Varley	Irene Wilcox
Julie E. Shroyer*	Diana R. Stroud	Wayne Vasey	Anne Wilkins
Ruth Shurter	Cynthia Stuen	Peter Vaughan	Anita Williams
Violet Sieder	Jack Stumpf	Katherine Vickery	Bathrus Williams
Doris Siegel	Josephine Stumpf	Florence Vigilante	Catherine G. Williams
Mildred Sikkema	Florence Sullivan	Joseph Louis Vigilante	Donald Williams
Barbara Silverstone	Martha Adams Sullivan	Dexter R. Voisin*	Ethel Williams
Mary Kingsbury Simkhovitch	Caroline Sunderlin	Patricia Volland	Janet B. W. Williams
W. June Simmons	Anna Sundwall	Betsy Schaefer Vourlekis	Katherine Williams
Bernece Simon	Emil M. Sunley	Alan Wade	Ruth M. Williams
Golnar Simpson	Louise Surratt	Anderson Wade	Vicki Gardine Williams
Jonathan B. Singer	August (Gus) Swain	Martha Waldstein	Ellen Winston
Jean Sinnock	Nancy Swank	(Willie) Bo Walker	Elizabeth Wisner
Max Siporin	Samuel Sylvester	Wilma Walker	Helen Witmer
Alan Siskind	Florence Sytz	Barbara Wallace	Ernest Witte
Ruth Smalley	Jessie Taft	John Wallace	Milton Wittman
Annette Raymon Smith	Jeanette C. Takamura	Lorraine Walling	Marion Wold
Jessie Smith	Lita Talbot	Sue Ward	Corinne Wolfe
Lucille Smith	George Taliaferro	Forrester Blanchard Washington	Reeta Wolfsohn
Marie Smith	Toshio Tataru	Daniel Wasson	Geraldine Wolter
Nelson Smith	Eleanor Taylor	Elizabeth Watkins	Marleen Wong
Vivian Smith	Ruth Taylor	Julia M. Watkins	Richard Woodrow
Zilpha Smith	Hilda Tebow	Larry D. Watson	Kay Woods
Virginia Smyth	Mila Ruiz Tecala	James (Jim) Wayne*	Luther Woodward
Cudore Snell	Morton I. Teicher	Hilary Noel Weaver	Barbara Bailey Hodges Wright
Donald Soeken	Esther Test	Mary Weaver	Helen Wright
Sanford Solender	Lann E. Thompson	Frank Webb Jr.	Tammy Wynn
Faustina Solís	Sophie Thompson	Raymond Webb Jr.	John A. Yankey
Barbara Bryant Solomon	Janet Thornton	Judy D. Webber	Jeffrey Scott Yarvis
Maida Solomon	Daniel Thursz	Kenneth Richard Wedel	Josephine Yelder
Renee Solomon	Charlotte Towle	Kathryn Conley Wehrmann	Beverly Yip
Harry Specht	Edolphus (Ed) Towns	Hyman Weiner	Alma Young
Dorothea Spellman	Jim Toy (1930-2022)	Stanley Weinstein	Hazel Young
Betty McCullough Spencer	Lorenzo Traylor	Helen Weisbrod	Whitney Young Jr.
Sue Spencer	Harleigh Trecker	Joan O. Weiss	Benjamin Youngdahl
Martha Spinks	Yuriko Domoto Tsukada	Ida B. Wells-Barnett	James Zabora
William J. Spitzer	Lorraine Tunstall	Robert C. Wells	Rollin Zane
Senator Deborah Stabenow	John Turner	Tommy Wells	Charles Zastrow
Rose Starr	Patsy Turrini	Irmgard Wessel	Nathalia Zimmerman
Herman Stein	Inez Tyler	Susan Westrom	Joan Levy Zlotnik
Fred Steinger	Patrick Francis Tyrrell	Janice Wood Wetzel	
Leonard Stern	Mark Umbreit	Darrell Wheeler	
Eva Stewart	Joan Upshaw	Barbara W. White	
Robert P. Stewart	Gertrude Vaile	Grace White	
Malcolm Stinson	Facundo Valdez	Frances Whitefield	
Shulamith Lala Ashenberg Straussner	Agnes Van Driel	Leila Whiting	
	Barbara Van Etten	Paul Widem	

*\*Represents new NASW Social Work Pioneers®*

---

## PIONEERS IN MEMORIAM



### **Alejandro Garcia (1940-2023)**

Professor of gerontology, human diversity and social policy, Dr. Garcia was a member of the faculty at Syracuse University's School of Social Work for 30 years. Nationally, he served

as chair of the National Hispanic Council on Aging, as a delegate to two White House Conferences on Aging, and was past chair of the National Policy Council of AARP. Garcia made significant contributions to the social work profession through teaching, research and policy advocacy.



### **Helen R. Hamlin (1922-2023)**

A gerontology expert, Hamlin was chairperson of the New York Citizens' Committee on Aging, and primary representative to the International Federation on Aging to the United

Nations (U.N.). She also chaired the U.N. NGO Committee on Aging and the Caucus of Older Persons for the World Summit for Social Development. In addition, Hamlin served as vice president of Health Advocates for Older People, Inc., and was a fellow of the Brookdale Center on Aging of Hunter College.

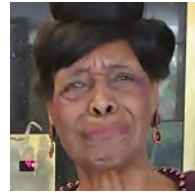


### **Marjorie Brittain Hammock (1936-2024)**

Hammock was a practicing social worker for nearly 50 years, and a leading social worker in the field of criminal justice. Her work in the area of

biopsychosocial assessment made her an expert witness in capital cases with the U.S. Department of Corrections. Through a USAID grant, she led in-depth studies of drug trafficking in Africa, Europe, the Middle East, the Americas

and South Asia. Hammock was an assistant professor and field coordinator in the Social Work Department at Benedict College.



### **Bernice C. Harper (1922-2024)**

Harper was a pioneering figure in hospice care and public health, with a career dedicated to expanding access to compassionate end-of-life services. She played a crucial role in establishing

one of the nation's first oncology social work programs and was instrumental in advocating for hospice care coverage under Medicare and Medicaid. As one of the first women of color to earn a master of public health from Harvard University, she significantly shaped the landscape of health care and social work.

Before embarking on her transformative career, Harper faced challenges as a young student in the segregated South. Her acceptance into the University of Southern California as the first out-of-state student and first African American woman in its school of social work marked a significant milestone. Despite experiencing overt racism on her first day, she persevered and built a supportive community that helped her thrive.

With a strong commitment to social justice, Harper's early aspirations included becoming a missionary in Africa, a dream that eventually materialized. Her career began at Children's Hospital of Los Angeles, where she advocated for policy changes that improved care for children with asthma. She later rose to chief social worker at City of Hope, where she established one of the first oncology social work programs in the U.S.

Harper's influence extended globally when, in the 1990s, she was invited to Africa to address hospice care challenges during the AIDS crisis. This experience fueled her passion

for expanding hospice and palliative care services, leading her to found the Foundation for Hospices in sub-Saharan Africa in 1999. Her vision and determination laid the groundwork for ongoing efforts to enhance end-of-life care across the continent.

Harper served as the chair of the NASW Social Work Pioneer Program Planning Committee from 2005 until June 2024, earning high praise for her exceptional leadership of the annual program. Her efforts significantly enhanced the program's prominence and solidified its impact and legacy in the field of social work.



### **John D. Herron (1947-2024)**

Herron founded Harbor City Services in 1987 in Baltimore—an organization that continues to focus on employing individuals with mental illnesses or addictions. He spent more than 45 years learning about schizophrenia and its impact on individuals and their families. He was a clinical professor at the University of Maryland School of Medicine. He taught community and rehabilitative psychiatry to psychiatric residents and psychopathology and human behavior to social work students.



### **Leslie Leighninger (1943-2024)**

Leighninger's landmark textbook, "Social Work, Social Welfare and American Society," gave students historical context on social welfare evolution through the decades. In her leadership role at the Social Welfare History Group, Leighninger spearheaded a program with the American Historical Association to share the work of social welfare historians. As a policy and social welfare history scholar, educator and administrator, she greatly expanded the knowledge base in the evolution of the social work profession and in social welfare in general.



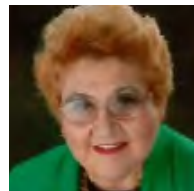
### **Anita J. Mackey (1914-2024)**

Mackey was the first African American supervisor at the Veterans Administration's outpatient clinic in Los Angeles. At 110 years old, she was the oldest living NASW Pioneer and remained an active NASW member throughout her life. She was known for her service to the Mental Health Advisory Board, the Civil Rights Commission and the Mental Health Association.



### **Carlton Munson (1940-2024)**

Renowned for making contributions to clinical social work practice and the social work profession, Munson helped ensure that clinical social workers were recognized as expert witnesses in the federal and state court systems. He was a nationally acclaimed clinical expert witness in child welfare cases, a much-sought-after consultant and a longtime member of the University of Maryland School of Social Work faculty. His academic career also included faculty appointments at Shepherd University, Catholic University of America, University of Houston and Fordham University.



### **Annette Raymon Smith (1936-2024)**

Smith's social work career spanned more than 40 years in multiple service arenas, including public welfare, mental health and addictions. As a psychiatric social worker at Napa State Hospital in California in 1968, Smith implemented one of the earliest inpatient alcoholism rehabilitation programs in the country. Working for the California Department of Health, she designed the first men's alcohol detoxification center, and successfully advocated for the establishment of a women's center.

---

# **PIONEER EVENT PARTNERS**

## **CELEBRATING THE ACHIEVEMENTS OF PIONEER HONOREES**

Case Western University Mandel School of Applied Social Sciences – Dexter R. Voisin, Dorothy Fallor,  
Kimberly J. Strom

Columbia University School of Social Work – Karen Bullock, William Neal Brown (1919-2009),  
Charles E. Lewis Jr., Dexter R. Voisin

Council on Social Work Education – Diana DiNitto, Goutham Menon, M. Patricia O'Brien  
NASW – Class of 2024 Pioneers

NASW Assurance Services, Inc. – Enrico De Gironimo

University of Houston Graduate College of Social Work – Susan P. Robbins

University of Michigan School of Social Work – William H. Butterfield, Michael Sherraden, Julie E. Shroyer,  
Dexter R. Voisin

University of North Carolina School of Social Work – Kimberly J. Strom

University of Texas at Austin Steve Hicks School of Social Work – Diana DiNitto, King Davis

## EVENT DONORS

Darlyne Bailey

Steve Browne, in honor of Enrico  
De Gironimo

Karen Bullock

Elaine Congress

Sandra Crewe, in memory of  
Dr. Bernice Catherine Harper &  
Dr. Ruby Gourdine

Kerri Criswell

Robert Connolly, in memory of  
Bernice Catherine Harper

JaNeen Cross

Herman Curiel, in memory of  
Dr. Carlton Munson

Enrico De Gironimo, in honor of his  
family, past, present and future

Fran Danis, in honor of Barbara White

Richard Edwards

Wanda Ellingson

Lorrie Gardella, in honor of Louis Lowy

Esther Langston

Steve Hornberger, in memory of  
Bernice Catherine Harper

Nathan Linsk

Victor Manalo

Mary McCarthy, in honor of  
Kimberly J. Strom

Joseph Monahan

Rebecca Myers, in memory of  
Bernice Catherine Harper

M. Patricia O'Brien, in honor of  
Fran Danis

Melissa Pappas

Salome Raheim, in honor of  
Dr. Darlyne Bailey

Cudore Snell, in memory of  
Bernice Catherine Harper

Betsy Vourlekis, in memory of  
Bernice Catherine Harper

Brian Williams

Joan Zlotnik, congratulations to  
the new 2024 Pioneers

***Congratulations to the  
2024 Social Work Pioneer® Inductees***

***— Pioneer Steering Committee***





# THANK YOU

TO THE 2024 SOCIAL WORK PIONEER® INDUCTEES

for your remarkable contributions to advancing the field of social work. Your impactful work has transformed the lives of individuals, families, and communities, and we celebrate your achievements. The positive effects of your efforts will resonate for generations, providing crucial support to vulnerable populations. By building upon the foundations laid by previous visionaries, you've strengthened social justice initiatives in profound ways. Whether as practitioners, academics, activists, government leaders, or hospital administrators, your roles are vital to our progress. We are proud to honor and recognize you today.



**DR. ANTHONY ESTREET**  
CEO, NASW AND  
PRESIDENT, NASW FOUNDATION



## Congratulations to the NASW Social Work Pioneer® Inductees



CONGRATULATIONS TO THE NASW SOCIAL WORK PIONEER® INDUCTEES OF 2024! YOUR DEDICATION, CREATIVITY, AND RESILIENCE IN OVERCOMING CHALLENGES HAVE MADE SIGNIFICANT CONTRIBUTIONS TO THE COMMUNITIES WE SERVE. WE ARE THRILLED TO CELEBRATE YOUR ACCOMPLISHMENTS ALONGSIDE YOU, YOUR FAMILIES, AND YOUR PEERS AT THIS SPECIAL EVENT. THANK YOU FOR YOUR EXTRAORDINARY CONTRIBUTIONS TO THE FIELD!

**DR. YVONNE CHASE**  
PRESIDENT, NASW





# Congratulations!

## Congratulations on receiving the Social Work Pioneer Award!

Your commitment and leadership in the field are truly inspiring. This is a well-deserved recognition for your invaluable contributions to the social work profession.

[naswassurance.org](http://naswassurance.org)



# Congratulations

to our **Social Work Pioneers!**



**Dorothy Faller**  
(SAS '75)



**Dexter R. Voisin, PhD**  
*Jack, Joseph and Morton  
Mandel Dean in Applied  
Social Sciences*



**Kimberly J. Strom, PhD**  
(GRS '93, social welfare)



**CASE WESTERN RESERVE  
UNIVERSITY**  
Jack, Joseph and Morton Mandel  
School of Applied Social Sciences

# RUTGERS SCHOOL OF SOCIAL WORK

## CONGRATULATES 2024 NASW FOUNDATION PIONEERS



**KATHLEEN POTTICK, PH.D.**  
PROFESSOR



**WILLIAM NEAL BROWN, PH.D.**  
PROFESSOR

THANK YOU FOR YOUR INVALUABLE CONTRIBUTIONS TO  
RUTGERS SCHOOL OF SOCIAL WORK AND IMPACT ON THE PROFESSION



RUTGERS UNIVERSITY  
School of Social Work

[SOCIALWORK.RUTGERS.EDU](https://socialwork.rutgers.edu)



**Penn**  
**Social Policy & Practice**  
*UNIVERSITY of PENNSYLVANIA*

**The School of Social Policy & Practice (SP2) at the University of Pennsylvania congratulates 2024 NASW Social Work Pioneer® Dr. Samuel Bernard Little!**

This nationally recognized award comes as no surprise - known as a powerful advocate for equitable U.S. public housing over his decades long career, Dr. Little has been the epitome of what SP2 stands for; a place where we prepare the next generation of changemakers to work tirelessly for social innovation, justice, and impact.

Dr. Little earned his MSW from SP2 in 1974.



For more information, visit our website at <https://sp2.upenn.edu/> or follow us on social media @PennSP2!

THE NATIONAL ASSOCIATION OF SOCIAL  
WORKERS FOUNDATION

# SOCIAL WORK PIONEER AWARD

*Congratulations*  
**Dr. Goutham Menon, PhD '97**

Congratulations to our esteemed  
alumnus, on a lifetime of  
remarkable achievements and the  
well-deserved honor of being  
selected for this prestigious award.



**School of Social Work**

UNIVERSITY OF ILLINOIS URBANA-CHAMPAIGN





# Congratulations to the WashU Brown School 2024 NASW Social Work Pioneers®



**WILLIAM H.  
BUTTERFIELD**  
Professor Emeritus



**MICHAEL SHERRADEN**  
George Warren Brown  
Distinguished University  
Professor  
Founding Director of the  
Center for Social Development

**100**  
BROWN  
SCHOOL  
CENTENNIAL

[brownschool.washu.edu](http://brownschool.washu.edu)





**BOSTON COLLEGE**  
School of Social Work



Congratulations to

**Karen Bullock**

PhD, LICSW, FGSA, APHSW-C

Karen Bullock, the Louise McMahan Ahearn Endowed Professor in the Boston College School of Social Work and in Global Public Health, and an acclaimed researcher in health-related equity and inclusion issues, has been named a Social Work Pioneer by the National Association of Social Workers Foundation



Graduate College of Social Work  
UNIVERSITY OF HOUSTON

## CONGRATULATIONS!

The University of Houston  
Graduate College of Social Work  
extends their heartfelt congratulations to  
Professor of Social Work, Cele S. and Samuel  
D. Keeper Endowed Professor in Social  
Justice, **Susan P. Robbins** for being  
honored with the distinguished  
**NASW Social Work Pioneer award!**  
Your exceptional contributions to academia  
and the Social Work profession have set an  
inspiring benchmark for excellence.

*Being named an  
NASW Social Work  
Pioneer is perhaps  
one of the greatest  
honors of my career.*

- Susan P. Robbins



National Association of Social Workers

MAINE CHAPTER

On behalf of your NASW Maine family,  
congratulations on your well-deserved  
acceptance into the NASW Social Work  
Pioneers! Your dedication and impactful  
contributions to the field of social work  
have rightfully earned you this prestigious  
recognition. We are inspired by your  
commitment and look forward to your  
continued leadership and innovation.



**Dr. Franklin Brooks**  
Ph.D, MSW, LCSW



**CONGRATULATIONS!**  
2024 NASW SOCIAL WORK  
PIONEER



**Karen Bullock**  
PhD, LICSW, FGSA, APHSW-C

♥ Your NASW North Carolina Family

**CONGRATULATIONS!**  
2024 NASW SOCIAL WORK  
PIONEER



**Kim Strom**  
PhD, MSW

♥ Your NASW North Carolina Family

*Congratulations*

**M. PATRICIA  
O'BRIEN**

*(MSW '80, PhD '97)*



on being named an  
NASW Social Work Pioneer!

[socwel.ku.edu](http://socwel.ku.edu)

**KU**  
THE UNIVERSITY OF  
**KANSAS**  
School of Social Welfare

**LONGHORN  
EXCELLENCE.  
TEXAS-SIZED  
LEGACIES.**



*Congratulations to  
Drs. Diana DiNitto and King Davis  
on their well-earned Pioneer Awards.*



**TEXAS**

The University of Texas at Austin  
Steve Hicks School of Social Work



**Congratulations,  
Dr. Patricia O'Brien!**

**UNIVERSITY**   
*of SAINT MARY*  

---

**SOCIAL WORK**



The Worden School of Social Work at Our Lady of the Lake University in San Antonio, TX could not be prouder that the NASW Foundation is recognizing two of our MSW graduates as Pioneers in Social Work this year. Dr. Santos Hernández, who graduated in 1974, and Louise Thompson Locker, who graduated in 1976, have both garnered multiple recognitions for their outstanding efforts in the profession. With a career in both practice and higher education spanning more than 45 years, the contributions of Dr. Hernández to communities, students, peers, and the profession are profound. Ms. Locker is best known for beginning what is fondly known in San Antonio as the Elf Louise Christmas Project. The project, which operates on the dedication of volunteers now provides presents to more than 20,000 children each year, all delivered by a team of 500 Santas with the help of their elves. The Worden School celebrates and applauds the incredible accomplishments of these remarkable individuals!





# Congrats, Rachel!

Your Michigan social work family is so proud of you & your legacy of advocacy, education, & action!

Your dedication and remarkable contributions have left an indelible mark on not just the social work profession, but to the world. This honor is a testament to your passion & perseverance over the years.

Congratulations to our newest NASW Pioneer!

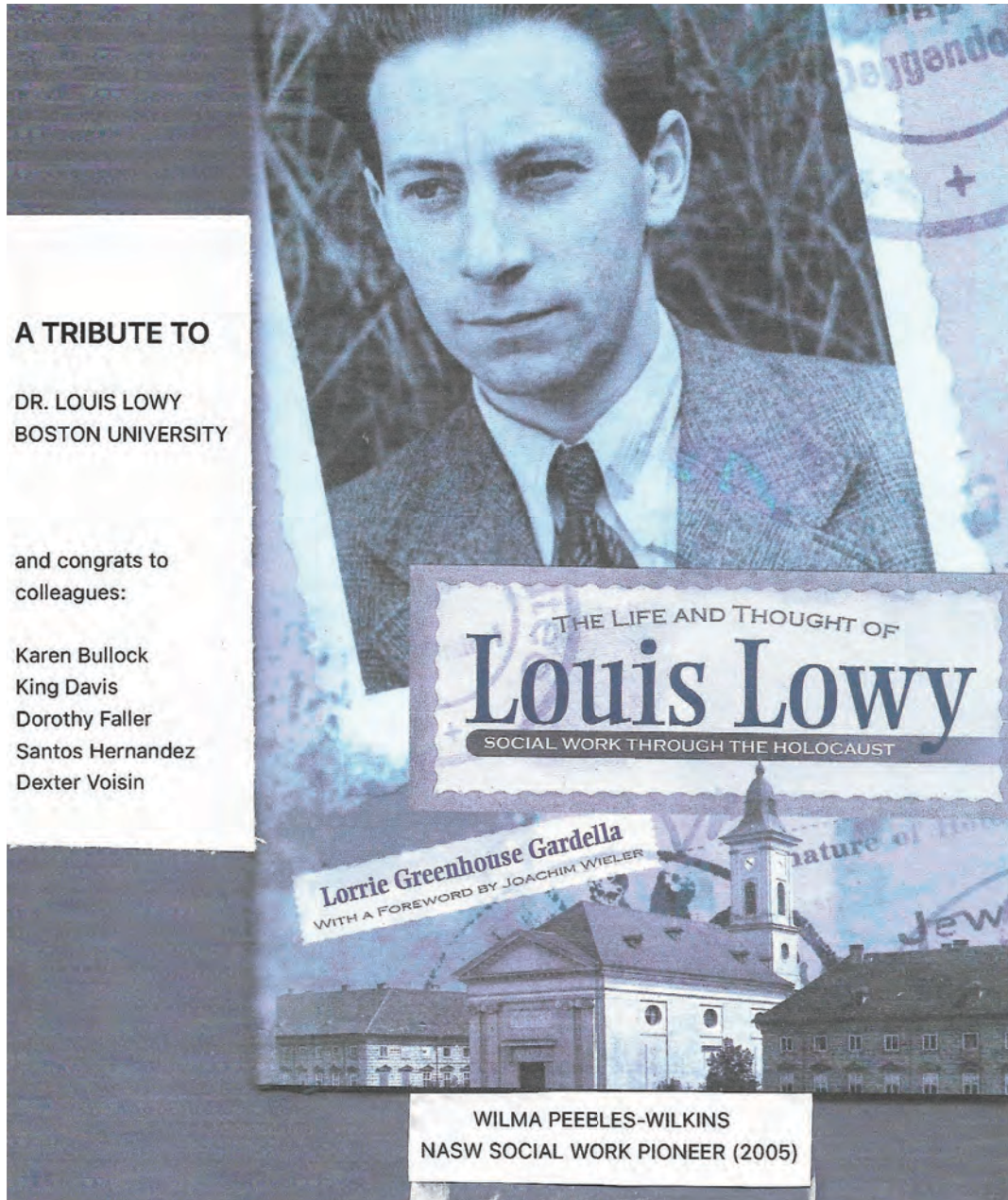


**A TRIBUTE TO**

**DR. LOUIS LOWY  
BOSTON UNIVERSITY**

and congrats to  
colleagues:

Karen Bullock  
King Davis  
Dorothy Faller  
Santos Hernandez  
Dexter Voisin



**WILMA PEEBLES-WILKINS  
NASW SOCIAL WORK PIONEER (2005)**





CONGRATS TO

**JULIE E.  
SHROYER**

---

**Congratulations**  
on being named an  
**NASW Social Work Pioneer®!**  
We are immensely proud  
and privileged to work with  
someone who cares so  
deeply about the  
social work calling!



**WHEAT SHROYER**  
GOVERNMENT RELATIONS



---

# Congratulations

Warmest Congratulations on becoming a  
NASW Social Work Pioneer.®

Thank you for your many contributions to the  
social work profession.



NASW PRESS

---



# Congratulations

**Celebrating Dr. Bernice Catherine  
Harper and all fellow Pioneers  
including the Class of 2024!**

**Suzanne Dworak-Peck**





*Congratulations*

**DR. GOUTHAM  
M. MENON**

**Thank you for your continued  
exemplary leadership!**

**Latesha Newson, MSW, LCSW**

President (2023-2025), National Association of Social Workers, Illinois Chapter Board of Directors  
Chair (2024-2025), Council of Chapter Presidents (CCCP), National Association of Social Workers

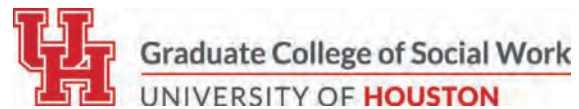
**Joel L. Rubin, MSW, LSW, ACSW, CAE**

Executive Director, National Association of Social Workers (NASW) Illinois Chapter





# Thank You to Our Sponsors





750 First St. NE • Suite 800 • Washington, DC 20002-4241 • 202.336.8298 • [NASWFoundation.org](http://NASWFoundation.org)